

Engaging Curious Minds



Community Impact Report 2022

A PLACE FOR YES!

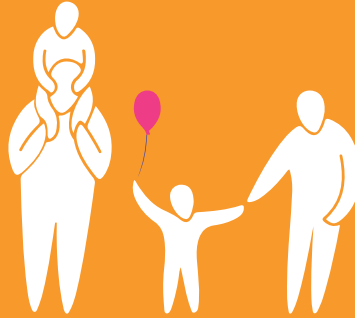
BY THE NUMBERS

2022



112,175

total number of kids, families, educators, and community members served in 2022



"20 years ago I was taking my daughter, this year we took our grands! It's still fantastic and great fun for the entire family."

- Terri Montgomery

71

Tennessee counties

47

states

24,411

program hours delivered by Discovery Center educators

18

FREE community events for

5,362

guests



"This is an amazing resource for STEM experiences for you and your kids. So much to do, see, touch, hear and learn from in each focus area." - Deborah Buma

13,195

number of students



4

NEW! immersive virtual programs developed with 5 museum partners across the state

100

schools



315

birthdays celebrated!





IN THIS REPORT

- 4** A Letter from our CEO and Board Chairman
- 6** Corporate Spotlight: Middle Tennessee Electric
- 7** Tennessee STEAM Festival
- 8** Deepening Our Impact
- 9** Donor Spotlight: The Christy-Houston Foundation
- 10** WaterWorks
- 12** Meet Our Playmakers
- 14** Discover Rutherford
- 15** Member Spotlight: Shannon & Aubrie
- 16** Partner Spotlight: Rutherford Arts Alliance
- 17** Board Member of the Year
- 18** Financial Snapshot & Contributors



502 SE Broad Street | Murfreesboro, TN 37130
 (615) 890-2300 | explorethedc.org

Mission

Engaging curious minds to fuel the future

Vision

To build a community with the courage to ask thoughtful questions, the drive to find creative solutions, and the confidence to implement positive changes.

Values

Diversity & Inclusion • Creativity • Transformative Learning • Curiosity • Fun & Play

Leadership Team

Tara MacDougall
 President & CEO

Veronica Bosnak
 CFO, Vice President of People & Culture

Lindsey Jennings
 Vice President of Philanthropy

Liz Rueby
 Senior Director of Museum Experiences

Jennifer Uhl
 Senior Director of Strategic Initiatives & Information Systems

Caleb Quinn
 Director of Facilities & Exhibits

For questions about this publication, contact Jennifer Uhl (615) 890-2300 x236.



A Place for Yes!



Dear Friends:

Discovery Center is a place where children learn through play and exploration in environments that we have designed just for them. Recently, I listened to a mother describe her interactions at home with her two-and-a-half-year-old, and I experienced a “light bulb” moment.

The mother shared, “Right now, Jane is interested in helping us cook and of course, we have hot things in the kitchen, sharp things in the kitchen, and we realized that we were constantly telling her “NO”. This was having an impact on our relationship with her. She needed to hear “yes”, we needed to give her a “yes”. We decided that we would to take her to the Discovery Center, and we were going to be able to give her a “yes!” 💡

Discovery Center is A Place for Yes!

We believe the brilliance of Discovery Center is that each child has the freedom to explore in their own way, in their own time, with active guidance by their parent, grandparent, or caregiver. Jane’s exploration of our new Water Works exhibit promotes her curiosity and discovery and encourages her to splash and measure, recognize cause and effect, take in new information through her senses, and learn how to share and take turns. Her mother was able to give her a YES!

Yes, with help from our supporters and through our Tennessee Rural Impact Project, we can provide access to the high-quality learning experiences that Discovery Center offers beyond our walls to rural areas, serving schools, families, and communities with their ever-changing issues and concerns.

Yes, ALL children in our community should feel safe and that they belong at Discovery Center. Our All Access and Kids First programs and free events are designed to eliminate physical, cognitive, and economic obstacles that might prevent some children from feeling a sense of belonging at Discovery Center.

We thank all of you for investing in Discovery Center. We are grateful for this giving community that believes in its children and its future.

Tara A. MacDougall
President & CEO

MISSION

Engaging curious minds
to fuel the future

VISION

To build a community
with the courage to ask
thoughtful questions,
the drive to find creative
solutions, and the
confidence to implement
positive changes.

VALUES

Diversity & Inclusion
Creativity
Transformative Learning
Curiosity
Fun & Play

Letter from Our Board Chair



Dear Friends of the Discovery Center,

It is a great pleasure to serve as the Chairman of the Board of Trustees of Discovery Center. As board members, we make a commitment to serve as powerful champions of the mission and vision of Discovery Center.

One of the responsibilities of the board is to develop a robust strategic plan that both describes what we want to achieve, and how we want to achieve it. Discovery Center's five year strategic plan has three overarching goals:

1. Deepen our impact among children, caregivers, and educators
2. Invest in and leverage our staff, board, and volunteers
3. Build our organization for the future

As community partners, guests, members, and donors of Discovery Center, we need your help to "build our organization for the future".

As a Rutherford County employer, how Discovery Center delivers STEAM education enriches the children of our people, makes me proud to be on the board. I am invested in Discovery Center, not just as Board Chair, but as a grandfather. As many of you know, there is only one thing grander than being a grandparent, and that is bringing your grandchildren to a place like Discovery Center.

Help me and support Discovery Center to continue to bring light to the families of this community ensuring a bright future for all of us.

A handwritten signature in black ink, appearing to read "TR Campion".

Thomas R Campion
Board Chairman



Board of Trustees 2023

Akashia Anderson Murphy, MD
Family Health Associates

Rita Ash
Parks Realty

Garth Bentley
Pinnacle Bank

Madhavi Boorgu
Community Volunteer

Tom Campion
Chair
Franke Management LLC

Kelly Chastain
Rutherford County Schools

Amy Farrar
Tennessee Center for Estate & Elder
Law, PLLC

Elisabeth Harper Rood
Chair-Elect
LBMC

Paula Harris
Past-Chair
Thrivence

Marla Hord
Aimmune Therapeutics

Lauren Knox
Murfreesboro Medical Clinic

Nick Lewis
Palo Alto Networks

Sharon Pertiller
Vanderbilt University Medical Center

Bailey Pratt
Saint Thomas Rutherford Hospital

Rick Sain
Reeves-Sain

Bernie Steen
Secretary
Retired

Rachel White
HCA

Susan Wilson
Belle Meadows Farm

Tara MacDougall
President & CEO



Middle Tennessee Electric

Corporate Spotlight

While the primary mission of the Middle Tennessee Electric is to deliver reliable and affordable power, its secondary mission has always been to make a difference in the communities it serves. In the 1930s it was going from community to community teaching farmers and homeowners how to use electrical appliances. In the 1960s they began working with local high schools in the Washington Youth Tour program. In the 1970s it was developing energy conservation programs.

The cooperative has focused attention on the largest community-impact effort it has ever undertaken with the formation of SharingChange which has now donated more than \$12 million to local non-profits. SharingChange is also the avenue through which the cooperative assists community causes and families in emergency situations.

Since 2004, Middle Tennessee Electric has had a strong and steady history of support for Discovery Center. Annual grants from the Sharing Change foundation have funded such projects as the STARlab portable planetarium, the STEAM Bus, and field trip scholarships. In fact, Sharing Change provided the

first grant for our All Access initiative which provided assistive technologies for visitors with special needs.

Middle Tennessee Electric's motto of "Service to make life better" also includes their dedicated staff. Employees continuously serve on our advisory board and volunteer or attend several Discovery Center fundraising events.

"Discovery Center is the kind of institution that should make a community proud, and MTE is honored to support its great mission and work. I certainly appreciate the efforts of the Discovery Center team who work so passionately to make a positive difference for our children."

Chris Jones, President & CEO



TENNESSEE STEAM! FESTIVAL



The **2022 Tennessee STEAM Festival** found ways to celebrate the incredible homegrown talent and STEAM energy in our amazing state. Our partners hosted some truly innovative and dynamic events in the sixth year of this statewide festival. A huge thank you to our partners and supporters!



34,200+
people reached



264
events

topics included:

- Astronomy
- Aviation
- Break-dancing
- Chemistry
- Engineering
- Entomology
- Magic
- Music
- Paleontology



94
event hosts



24
partner communities



Featuring over **30 exhibitors**, the museum's outdoor area transformed into a huge STEAM classroom. Booths in all directions offered dynamic experiments and demonstrations, hands-on activities, and interactive fun hosted by STEAM professionals, researchers, and experts.



Presented in collaboration with the Rutherford Arts Alliance and Middle Tennessee Electric, the inaugural **Lantern Parade** celebrated how individuals come together and joyfully light up our community!

Winner - 2023 TAM Award of Excellence
2022 TSF SPONSORS



SAVE THE DATE! OCTOBER 13-22, 2023

Broadening Our Reach

The Discovery Center's constructivist, inquiry-based approach to learning provides an excellent resource for memorable field trips and outside-the-classroom learning while also supporting the more formal classroom setting. We offer guided field studies, mobile programs, and virtual experiences that feature exhibits and staff-led activities designed to complement standards-based social studies and STEM curriculum.

As part of our 2022-26 strategic plan, one strategy to deepen our impact was to adjust our target grades for school education programs to reflect grades 3 & 4, while retaining a commitment to PreK-2nd grades. In 2022, we introduced the Eco Engineers field trip, developed virtual, immersive programs, and upgraded our StarLab Planetarium.

Eco Engineers is an exploration in engineering. Using a variety of materials and their knowledge, students build their own relocation containers to help rescue a beaver in the wetlands. As students iterate through this design challenge, they gain firsthand experience in the design process. This field trip also lends itself to social learning experiences as students can ask questions, make observations, and discuss their ideas together.



Immersive programs are a result of a collaborative effort we call TRIP (Tennessee Rural Impact Project). TRIP is funded in part by the Institute of Museum and Library Services. Working with the Science Alliance of Tennessee, a consortium of informal learning centers across the state, TRIP is developing new ways in which informal education centers can partner to support STEM learning for early elementary students, teachers, and parents/caregivers in the most challenged rural communities.



TRIP developed 4 immersives that were designed for and with individual classrooms, grades, or schools. These virtual experiences utilize our museum resources to bring STEM learning into the classroom in ways that connect to Tennessee state curriculum and provide students an opportunity to ask questions and engage with museum facilitators as if they were in person in the classroom.

Our new StarLab provides an exciting and interactive activity with a corresponding curriculum that puts the student at the center with their participation as a central theme. The broad curriculum available with StarLab enhances our offerings to the community not only in earth/space science but also in science inquiry, history, and nature of science.

Working with local school districts, Discovery Center has identified areas of focus to provide during field study experiences. As more areas are identified through data driven outreach, we are committed to the development of engaging programs, field studies, and mobile outreach.

*"Teaching is not something we can do on our own. Thank you for pre-teaching about Tennessee. This is our 4th quarter standard in Social Studies, so it is perfect!"
Mrs. Martin, College Grove Elementary, 1st Grade*



Christy Houston Foundation

Donor Spotlight

The Christy-Houston Foundation, Inc. was created from the proceeds of the sale of Middle Tennessee Medical Center to Saint Thomas and Baptist Hospitals in 1986. Discovery Center, then Children's Discovery House, was fortunate enough to be the Foundation's first grant recipient under the leadership of museum Founder, Billie Little. A matching grant was secured to buy the museum's first property, located at 503 North Maple Street. The Christy-Houston Foundation, a private health-legacy foundation, remains one of Discovery Center's most significant donors since inception.

The CHF Directors view the local, children's museum as an extension of their mission to improve the quality of life, especially for the youngest residents of Rutherford County. Discovery Center's successful CHF grant requests total \$3,010,780 to date, including \$783,000 in 1999 for the creation of the current Murfree Spring location, \$1.75M in 2006 for museum expansion, and most recently, \$400,000 in 2021 to fund the museum's new WaterWorks exhibit.

"The CHF Directors enjoy knowing that the grants provided to Discovery Center support the actual physical growth and mental development of children throughout our geographic footprint in Rutherford County. There is always a new lesson to be learned at Discovery Center, even if it is taking turns going down the 2-story slide. The Directors know that investing in our local youth always provides a good return on investment for the Foundation and our community."

Anne Davis, President

The mission of The Christy-Houston Foundation is to enhance the quality of life in Rutherford County, Tennessee, with emphasis on health care, through distribution of its grant resources to programs and projects that will accomplish such enhancement.



Children's Discovery House - 503 North Maple Street



Discovery Center at Murfree Spring Grand Opening - August 2002



7,000 Sq. Ft. Expansion - October 2007

water works

Brought to you by:

The Christy-Houston
Foundation

Middle Tennessee Electric

TVA

Lana Seivers

TAM Tennessee
Association of
Museums

Winner - 2023 TAM Award of Excellence



Photo credit: Angel Pardue Photography



Photo credit: Angel Pardue Photography



Photo credit: Angel Pardue Photography



Photo credit: Angel Pardue Photography





WaterWorks Makes a Splash!

Discovery Center seriously upped the wet fun factor in 2022 with our new WaterWorks exhibit. This exhibit replaces the museum's previous water table, which had been a prominent feature on the facility's first floor for over 20 years. The new WaterWorks features squirt guns, fishing pond, hydroelectric dam, adjustable aqueducts, vortex ball-drops and launchers, and much more.

WaterWorks introduces children to higher-level math concepts like volume, early physics concepts like motion and flowing water, and provides sensory exploration as children take in new information through their senses.

Water Works is great for social learning too! With over 100,000 children enjoying the exhibit each year, they must learn how to take turns and share the space. They can also work together to see which pipes splash the farthest, create a dam and then release it to flood the farm, or even generate hydroelectric power.



Meet Our Playmakers



Photo credit: Angel Pardue Photography

Veronica Bosnak, Jennifer Uhl, and Tara MacDougall are some of the leadership staff who have shaped the museum mission for more than 10 years. This is impressive considering a 2018 study revealed that the average nonprofit employee stays with an organization for only 2-5 years. Here, they share their Discovery Center stories and favorite memories.

THE VETERANS

Veronica Bosnak, CFO & Vice President of People and Culture

20 Years of Service

What do you like about being CFO?

I get to spend my time working for the good of my community. I'm still in front of a computer and deep in numbers, but my job is at a children's museum, where I can actually see the results of my actions benefiting others.

What are you most excited about for Discovery Center's future?

That we can fill gaps in both children's and adult's knowledge of science and the environment to spark curiosity and responsibility to this planet.

Do you have a favorite memory?

I once flushed and blew up the toilet in the Tiny Town bathroom. That's second only to both myself and one of my daughters getting married here.

What has been your favorite project?

Developing and growing Shakesbeer, by far. I have loved getting to know and develop relationships with the brewers and actors.

They are both special groups of people that I am honored to have worked with.

Jennifer Uhl, Senior Director of Strategic Initiatives and Information Systems

15 Years of Service

What do you like most about your job?

It means a lot that my efforts help support our capacity to bring joy to every and any person who walks in the door. And I love working with our passionate educators.

What has been your favorite project?

I have a special place in my heart for the We Are Tennessee mural. It was such an inspiring project to work on. I loved being able to showcase the diversity of Tennessee, hear the stories of the art submitted, and collaborate with Murfreesboro's Artist Laureates.

Do you have a favorite memory?

One snow day I actually had sleds in my car, so all the staff, from Visitor Services to CEO, took a sled break! I also love seeing nature in action like hatching snapping turtles and snakes eating other snakes.

Tara MacDougall, President & CEO

10 Years of Service

What do you like most about being CEO?

Such a challenge to identify one thing but a certain theme arises; engaging our children, parents, caregivers, community partners, donors, board members, and staff, to reach beyond their potential and find hope and joy inspired by every moment spent here.

What has been your favorite project at Discovery Center?

The launch of the state-wide Tennessee STEAM Festival to celebrate 30 years of support for Discovery Center, which is now being recognized outside of Tennessee.

What are you most excited about for Discovery Center's future?

Being an anchor of the revitalization of Murfreesboro bottoms.

Do you have a favorite memory?

The Mercury transit of the sun, partnered with MTSU and their student club. Thousands of people traveled to Nashville for the viewing and they ended up with clouds. Perfect viewing in Murfreesboro.

A great success in 2022 was a dedication to retaining and attracting staff. Resetting pay strategies and increasing salary budgets allowed the Discovery Center to grow our team, raise the minimum starting rate to \$13.50, and provide market adjustment increases for salaried staff.



Discovery Center hired 11 new staff members in 2022 including three new positions: Philanthropy Coordinator, Outreach Programs Coordinator, and Senior Director of Museum Experiences. We asked some of our new staff to share a bit about themselves and answer some "getting-to-know-you" questions.

THE ROOKIES

Liz Rueby, Senior Director of Museum Experiences

What's your favorite thing about working at Discovery Center?

My favorite part of this experience is watching families interact, ask questions, and build prior knowledge for future learning endeavors.

If you could learn anything, what would it be?

I am a lifelong learner. I would like to learn how to fly a plane.

Betty Kirkeninde, Visitor Services Specialist

What is your favorite exhibit?

Simple Machines

Jenna Anderson, Front Desk Specialist

What is your favorite thing about working at the Discovery Center?

Talking to guests and putting a smile on their faces.

When you have 30 minutes of free-time, how do you pass the time?

Crafting and spending time with the people that I love.

Brianna Cyriaque, Front Desk Specialist

What is your favorite thing about working at the Discovery Center?

Seeing the smiles on kids faces when they walk into the building.

If you could learn anything, what would it be?

To handle the animals.

Candice Urias, Philanthropy Coordinator

What advice do you have for parents who bring their kids to the Discovery Center?

PLAY! Get on the floor, get dirty and don't hold back. Amazing connections and memories that will last a lifetime are made for you and for your children when we engage with them through play.

When you have 30 minutes of free-time, how do you pass the time?

I love spending time outdoors and going on adventures exploring my new home state with my daughter Kylie.

Jacob Robinson, Visitor Services Specialist

What's your favorite thing about working at Discovery Center?

Watching the kid's minds wonder and learn new things.

What's one piece of advise you have for parents visiting the museum?

Always bring an extra change of clothes, the kids love the water table.

Melody Beaver, Visitor Services Specialist

What's your favorite thing about working at Discovery Center?

I love that moment when I've had an emotional connection with a child and helped make that child's day.

What's your favorite exhibit?

5 Senses

Taylor Tapley, Outreach Projects Coordinator

What is your favorite exhibit?

The Great Outdoors & our turtles

If you could learn anything, what would it be?

How to speak to animals!

Sarah Hicks, Exhibits Education Specialist

What is your favorite exhibit?

I love Tiny Town. It reminds me of a similar exhibit at the children's museum I went to growing up. I was always a little actress, so I loved taking on the different community roles. Now it's fun to see how kids take on "adult" roles. It gives us, as actual adults, the chance to see how they view and interpret the world.

If you could learn anything, what would it be?

I want to learn American Sign Language!

Liz Morgan, Front Desk Specialist

What is your favorite exhibit?

The Farmer's Market

If you could learn anything, what would it be?

How to play guitar

Ryan Gerke, Visitor Services Specialist

What's your favorite thing about working at Discovery Center?

The people. I couldn't ask for a better team of people to work with.

What's your favorite exhibit?

Nature Play

Not pictured: Jenna Anderson, Sarah Hicks, Liz Morgan, Taylor Tapley

Celebrating Cultural Diversity

In September of 2022, Discovery Center held the inaugural Discover Rutherford food and cultural festival. Our hope was to provide an experiential opportunity for residents of Rutherford County to join together and discover how joyous traditions of music, dance, food, and art can foster mutual understanding and connection.

The event was also an opportunity to present a Discovery Guild Impact Award honoring those who demonstrate excellence in creating greater diversity, inclusivity and equitable opportunities within the community. The 2022 honoree was Greg Lyles, a celebrated educator in Murfreesboro City Schools. Greg spent his career supporting the needs of the districts most vulnerable students and connecting schools with community partners.

We are humbled by the community response to the first year of this event which brought together **194** guests, **15** restaurants, **5** performance groups, and **5** Middle Tennessee State University student associations. Participants spent a beautiful day sharing the unique and beautiful ways they celebrate life, learning about their neighbors' traditions, and seeing the threads that bind us together to form our community.





Member Spotlight

Shannon Marsh became a member of the Discovery Center when her two oldest sons were younger. It just made sense to become members so they could stay engaged with learning throughout their youth. Those two boys are grown now, but Shannon has a young daughter and wants the same for her - to engage with learning through creative and thoughtful play!

What does visiting the museum mean to your family?

Shannon: A visit to the Discovery Center means that Aubrie will be creatively learning through play. The time that a child is young is very short, so all children should have the opportunity to learn through fun!

What would you tell someone who is thinking about becoming a member?

Shannon: It is one of the best decisions you can make for your children, Just do it!

“The employees make children and their learning the very top priority,” says Shannon. “I think it is a blessing to my family and everyone who attends the Discovery Center and its programs.”

What is your favorite part of Discovery Center?

Aubrie: The water table because there’s these little pipes that you can shoot balls up, and then they can come down into this rocket ship. Then there’s like this tornado at the bottom, and so when all those balls come out they flow down into where the water is.

What’s the best thing about camp at Discovery Center?

Aubrie: Meeting new friends.

What’s the most interesting thing you’ve learned at Discovery Center?

Aubrie: How to make playdoh.



The Discovery Center Board of Trustees is thrilled to announce the launch of the Discovery Center’s new legacy program called **The Little Society**, affectionately named in honor of Discovery Center’s Founders, Billie and Dr. Joe Little.

Long-term supporters of Discovery Center know that hands-on learning and play lights a spark for life-long curiosity and something magical happens. We invite you to open the door to even bigger giving to support an organization that you already hold dear.

By making a planned gift through joining The Little Society, you now have a powerful tool to make a longer-term statement of support for an organization that ignites the imagination of community members, from children to grandparents.

Planned gifts can help you with effective tax reduction strategies while ensuring that the museum can generate the resources needed to carry out our programs for years to come. By combining charitable giving with your financial and estate planning, you will create a personalized, lasting legacy.

Planned giving can be as straight-forward as including a bequest to Discovery Center in your will. Other more sophisticated options, such as charitable gift annuities, offer guaranteed income and substantial tax savings.

To learn more, please contact your personal financial professional or contact:

Lindsey Jennings, Vice President of Philanthropy
ljennings@exploredc.org

Discovery Center’s Tax ID number is 62-1273308.

Rutherford Arts Alliance

Partner Spotlight

The Rutherford Arts Alliance is a group created to identify, unite, and promote arts, culture, and heritage throughout Rutherford County, Tennessee. As their tagline states, their purpose is “connecting creatives and community.” And their strong activity in the community shows they stand behind what they say.

RAA's activities in just the last five years have included organizing community mural projects, offering workshops in art, photography, auditioning and writing, installing the Heart of Tennessee sculpture in the Meditation Garden of the Gateway Island Breezeway, participating in the Tennesseans for the Arts Advocacy Day and Greenway Arts Festival, and working with community partners such as the Leading Ladies of Rutherford County project, Cultural Arts Murfreesboro, and The Better Boro project.

*Learn more about the RAA at
www.rutherfordartsalliance.org.*

Discovery Center is proud to partner with RAA during the annual Tennessee STEAM Festival and to launch the inaugural Lantern Parade in 2022. Why a lantern parade you ask? A lantern parade is the perfect juxtaposition of art, science, and community. Lantern parades connect people to people and people to place.

RAA and Discovery Center attended different community events leading up to the parade offering lantern making activities. Visitors could also design their own lantern and become one with the merrymakers at Murfree Spring.



Abby Reish, Artist

“You don’t have to be an artist if you want to make a lantern and get in on the fun,” declares Abby Reish, RAA member, local artist, and creative SPARK for the lantern parade. “Just unleash your creativity.”

On Thursday, October 20, 2022, almost 200 visitors to the Lantern Parade were wowed by the color and illumination, and the creativity and the community spirit it generated for this grand temporary public art display.



RAA Members (L-R): Abby Reish, Sloane Roeder, Susan Gulley, Veronica Roeder



Board Member of the Year

Bernie Steen

Joining the board in 2017, Bernie was no stranger to Discovery Center having brought his own children to the original Discovery House. "I was impressed that Murfreesboro had a place where children could play and learn outside of school," says Bernie.

Bernie is exemplary in leadership, commitment, and advocacy as a champion of our mission. He is a truly engaged board member serving as Board Secretary and being a member of the Finance and Executive committees. He is a generous annual donor who not only regularly attends museum fundraisers but also consistently promotes the work of Discovery Center. Most recently, Bernie was instrumental in securing a \$40,000 gift from Middle Tennessee Electric for the WaterWorks exhibit. This connection has led to potential new programs in partnership with MTE launching in 2023.

"I love our mission: 'Engaging Curious Minds'. There are many stories of children who have been inspired by the Discovery Center to pursue science-based careers in their adult lives."

Bernie's vision of the future of Discovery Center includes programming available to a wider audience whether through more mobile activities or new physical facilities in surrounding communities. He is proud of how the leadership team has worked hard to make the Discovery Center accessible to all. There are events for children with special needs along with cultural events.

Originally from Bowling Green, Kentucky, Bernie Steen transplanted to Tennessee more than 40 years ago. He is retired from Middle Tennessee Electric where he served as CFO and Vice President of Finance. He is married with two adult sons and a daughter in law. He's also a music lover and always on the lookout for a gig as a bass player.



Financial Snapshot 2022



After the negative impacts of the pandemic in 2020 and 2021, 2022 was a year of recovery for the museum. Our program revenues rebounded to at or near 2019 pre-pandemic levels along with admissions and memberships. While we fell short of some of our fundraising goals, Public and Private support remains at healthy levels.




On the expense side, we were able to increase staff rates of pay in response to the market and add several new positions, bringing our staffing closer to pre-pandemic levels. Due to inflation, we experienced increased costs in supplies, cost of goods sold, utilities and many other expenses. Close monitoring of spending levels and the increase in revenues enabled the museum to keep the effects of this challenge at a minimum.

A complete copy of our audited financial statements and 990 may be found at [Givingmatters.com](https://givingmatters.com).

Total revenue for 2022: \$1,891,598


Total expenses for 2022: \$ 1,784,769

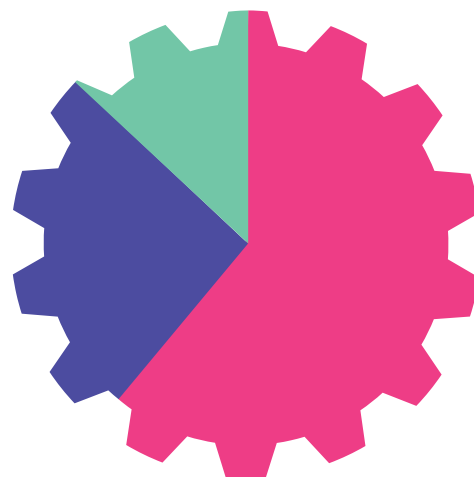
Where it comes from

-  **Private**
-  **Public**
-  **Program**



Where it goes

-  **Admin**
-  **Program**
-  **Fundraising**



WITH GRATITUDE TO OUR 2022 DONORS

The Discovery Center is grateful to have the support of donors who have graciously enriched our visitor experiences and created extraordinary opportunities for future generations.

\$100,000+

State of Tennessee

\$50,000 - \$99,999

The Nissan Foundation

\$25,000 - \$49,99

Mr. John Floyd
Jennings & Rebecca Jones
Foundation
Rutherford County
United Way

\$10,000 - \$24,999

City of Murfreesboro
Franke
The Franklin Institute
General Mills Foundation
Leslie & Michael Gove
The HCA Foundation
The Hillsdale Fund
Mrs. Billie & Dr. Joe Little
Richard Siegel Foundation
Tennessee Arts Commission

\$5,000 - \$9,999

Middle Tennessee Electric
SharingChange Inc
Predators Foundation
SEC-INC

\$2,500 - \$4,999

Mr. & Mrs. Fred Adams
Ascend Federal Credit Union
Barge Design Solutions
Consolidated Electrical
Distributors, Inc.
Fred H. Farrer Partnership
Paula & David Harris
Jeri Hasselbring
M.R. Metzger Family Foundation
Miller Loughry Beach Insurance
Services, Inc.
Redstone Federal Credit Union
Rutherford County Chamber
of Commerce
Smith-Wright Law

\$1,000 - \$2,499

Garth Bentley
Susie & Tom Campion
Mike Cardinal
Betty Childress
The Coggin Family Foundation
Betty & John Dixon
Farrer Bros Excavating
Farrer Bros. Hardware
Farrer Properties

Drs. Sherry & Russ Galloway
Joanne Gaydos
Growing Great
Ron Hall
Elisabeth Harper & Jason Rood
Vicki & Nick Lewis
Melton Concrete LLC
Murfreesboro Medical Clinic
& SurgiCenter
Dr. & Mrs. Jim Nunnery
Sarah & Blake Patterson
Ms. Julia Powell
Amanda & Shane Reeves
Mr. & Mrs. Richard Sain
Dr. Lana Seivers
Mr. & Mrs. Rick Swafford
Susan & Howard Wilson

\$500 - \$999

Jimmy Aho
Jim Bailey & Teresa Quance
Mr. & Mrs. Ronnie Barrett
Caitlyn Brown
Julie Corcoran
Mr. & Mrs. Jeff Davis
Gena & Steve Dix
Emily Duckworth
Elevated Off Road
Bailey & Scott Galloway
Mr. & Mrs. Kevin Heusinkveld
Representative John Hood
Dr. & Mrs. Warren Johnson
Mr. & Mrs. Bill Jones
Mr. & Mrs. Jason King
Zach Long
Maples Realty & Auction Co.
Dr. Akashia Anderson Murphy
Nashville Section American
Chemical Society
Mrs. Tina & Dr. Utpal Patel
Project One Four
Dr. Ellen Slicker
SmartBank
Mr. & Mrs. Bernie Steen
Team Electric Supply, LLC
Tennessee Academy of Science
William Wright
Emily & Joachim Zietz

\$250 - 499

Prentice Alsup
Mark Baker
Drs. Melanie & James Bishop
Matt Brabender
Drs. Robert & Elizabeth Bray
Colin Calhoun
Tianna & Nick Christiansen
Brandon Cotter

CRF Properties
Dave Davis
Dempsey, Vantrease & Follis
Durham Realty & Auction Co., Inc
Mrs. Vicki & Dr. Edward Eastham
Cindy & Gordon Ferguson
First Bank
Reida & Ashley Gambill
Mr. & Mrs. Ted Goodman
Saraswathi & CK Gowda
Grannis & Associates, PC, CPAs
Mr. Kevin Harney
Elias Hassan
Sharon & Dr. Murali Kolli
Kroger
Lucy & Dr. Warren Langworthy
Dr. Elizabeth LaRoche &
Mr. John Murray
Andrea & Ed Loughry
Maple Street Medical
Merck Partnership for Giving
Mr. & Mrs. Bill Mills
Mr. & Mrs. Newton Molloy
Amanda Moore & Jason Vance
Drs. Mary & Max Moss
Mr. & Mrs. Lee Moss
Mr. & Mrs. Robert Murfree
Ogles Electric Company
Dr. Tracy Pack
Prufrock Communications
Dr. Karen Puckett
Nicole Rich
Dr. Jean Anne &
Judge Mark Rogers
Sam Anderson Construction
Jessica & Paul Seegert
Sellers & Sellers, PLLC -
Attorneys at Law
Southern Motorsports
Promotions
Melinda Tate
Judge & Mrs. Royce Taylor
TCB Trans LLC
Dr. & Mrs. Bryan Terry
Frank Throneberry
Dr. & Mrs. David Urban
Mr. & Mrs. Chad White
Ellen & Paul Willson
Dr. & Mrs. Tom Wolohon
Mr. & Mrs. Andy Womack
Woodfin Memorial Chapel
Mrs. Peggy Young



A Sustainability Campaign for Discovery Center

\$100,000+

The Christy Houston Foundation
LaRoche Family Foundation

\$50,000 - \$99,999

Mr. & Mrs. Andy Adams
Adams Family Foundation
Mr. and Mrs. Ernest Burgess
John Floyd Charitable
Foundation, Inc.
Ole South Properties, Inc.
Tennessee Valley Authority

\$10,000 - \$49,999

Hamilton-Ryker
Mr. and Mrs. Nick Lewis
Middle Tennessee Electric
Membership Corporation
Pinnacle Financial Partners
Amy and Rick Sain
Lana Seivers & Matthew
Wearwell

\$1,000 - \$9,999

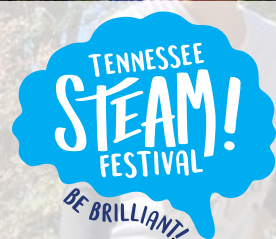
Anonymous
Judge and Mrs. Don Ash
Veronica and Joe Bosnak
Bright Funds
Tom and Susie Campion
Dr. and Mrs. Scott Corlew
Dr. and Mrs. Frank Drowota
J.R. and Amanda Greene
Jeri Hasselbring
Thomas and Lindsey Jennings
Mr. and Mrs. Bill Jones
M.R. Metzger Family Foundation
Preston and Tara MacDougall
Murfreesboro Medical Clinic &
SurgiCenter
National Health Foundation
James Nunnery
Mr. & Mrs. Fant Smith
Mr. and Mrs. Rick Swafford
Minh-Triet and Greg Tucker



Discovery Center at Murfree Spring
502 Southeast Broad Street
Murfreesboro, TN 37130
615-890-2300 | exploredcdc.org

OUR MISSION:
ENGAGING CURIOUS MINDS TO FUEL THE FUTURE

Participating Members



SAVE THE DATE!

OCT. 13-22, 2023

TNSTEAM.ORG